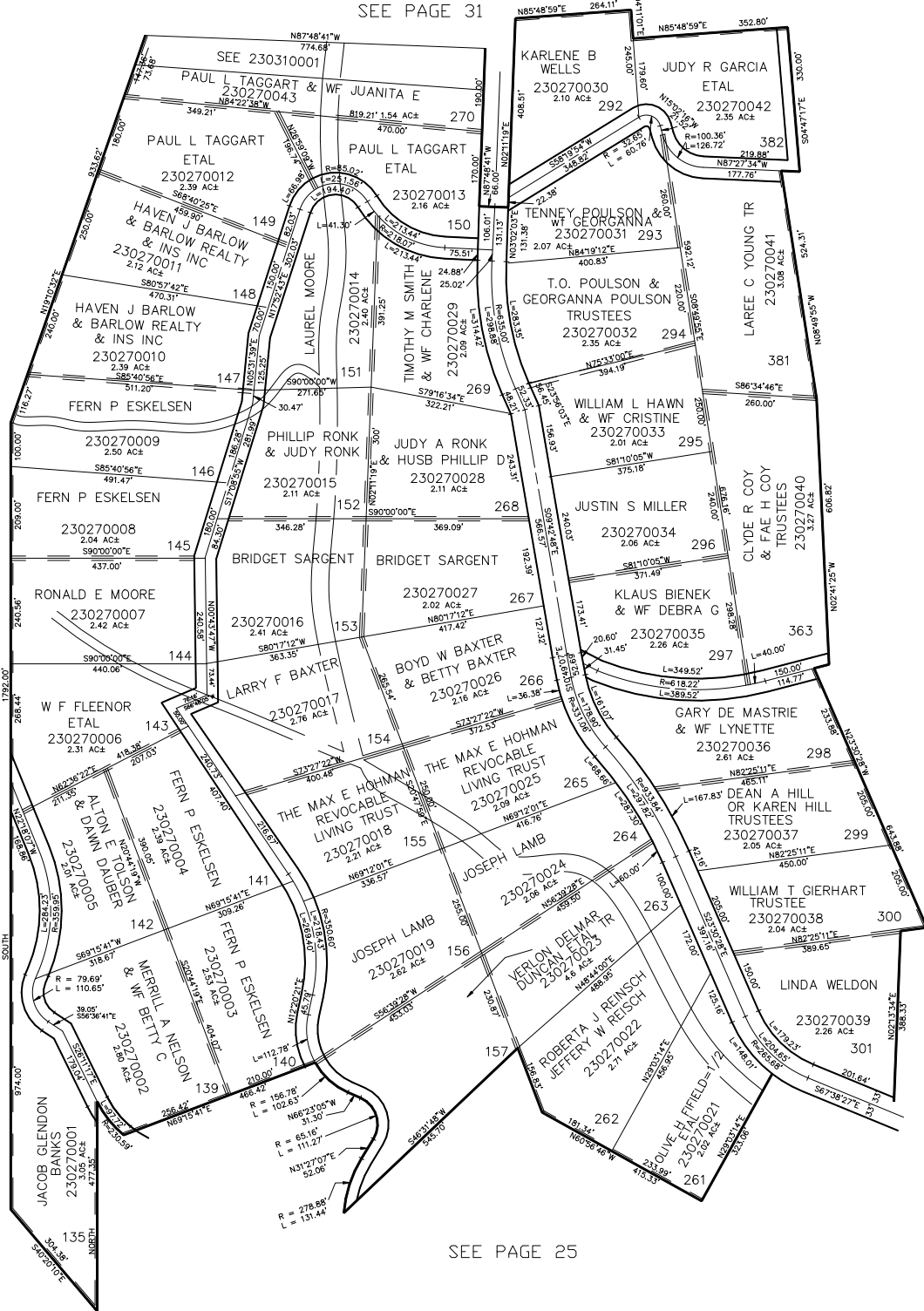


PART OF SEC. 29, 30, 31, & 32, T.7N., R.3E., S.L.B. & M.
EVERGREEN PARK SUBDIVISION NO. 1
LOTS 135,139-157, 261-270, 292-301, 363, 381-382

IN WEBER COUNTY SCALE 1" = 200'

TAXING UNIT: 58

SEE PAGE 31



SEE PAGE 18

SEE PAGE 33

SEE PAGE 25

FOR COMPLETE ENG DATA SEE ORIGINAL DEDICATION PLAT IN BOOK 13, PAGE 59 OF RECORDS.